

Sam & Sam Meats

851 Upland Ave Upland, Pa 19013 (610) 874-9484 Sales AD: 4/24 – 4/30/24



USDA Choice
Chuck Roast
\$5.49 LB



USDA Choice
Chuck Fillet Steaks
\$5.99 LB



USDA Choice
Bolar Roast
\$4.69 LB



USDA Choice
Shoulder Steaks
Or Rump Steaks
\$5.49 LB



USDA Choice
Cubed Steaks
Or Peppered Steaks
\$5.99 LB



USDA Choice
Butter Steaks
\$7.39 LB



USDA Choice
Top Round London Broil
\$6.39 LB



USDA Choice
Top Round Roast
\$5.49 LB



USDA Choice
Shoulder London Broil
\$4.99 LB



Family Pack
Fresh Ground Beef
\$3.69 LB



Family Pack
USDA Choice
Stewing Beef or Kabobs
\$5.99 LB



USDA Choice
Sirloin Steaks
\$6.99 LB



USDA Cry-O-Vac
Eye Round Roast
\$4.99 LB



USDA Choice
Cry-O-Vac
Bottom Round Flats
\$3.99 LB



USDA Choice
Cry-O-Vac
Beef Brisket
\$4.69 LB



Family Pack
Loin End Pork Chops
\$1.79 LB



Family Pack
Rib End Pork Chops
\$1.79 LB



Family Pack
Center-Cut Pork Chops
\$2.39 LB



Fresh
Spare Ribs
\$2.99 LB



Baby Back
Spare Ribs
\$3.99 LB



Smoked
Center-Cut Pork Chops
\$3.29 LB



Pigs Feet
\$1.69 LB



Sliced
Slab Bacon
\$3.99 LB



Fresh
Pork Bellies
\$2.99 LB



Family Pack
Meatloaf Mix
\$3.29 LB



Frozen Shoulder
Round Bone Lamb Chops
\$4.99 LB



Frozen Shoulder
Blade Lamb Chops
\$4.89 LB



Family Pack
Chicken Drumsticks
\$0.99 LB



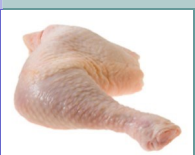
Family Pack
Chicken Tenders
\$2.99 LB



Family Pack
Boneless Chicken Breast
\$2.69 LB



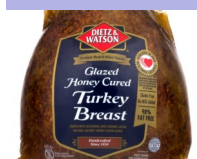
Family Pack
Turkey Wings
\$2.49 LB



Family Pack
Chicken Leg Quarters
\$0.79 LB



Frozen
Cornish Game Hens
\$2.99 LB



Dietz & Watson
Honey Glazed Turkey
Save \$1.50 LB
\$7.29 LB



Dietz & Watson
Honey Grilled Chicken
Save \$1.60 LB
\$5.99 LB



Cornershop or
Perdue Harvestland
Oven Roasted Turkey
\$5.99 LB



Hormel Premium
Cooked Ham
\$3.69 LB



Kunzler
Olive or P&P Loaf
\$4.59 LB



Hatfield
German Bologna
Save \$0.50 LB
\$3.49 LB



C/V Cooper
Sharp White Cheese
Save \$0.20 LB
\$5.99 LB



Dietz & Watson Beef
Skinless Sausage 3 LB PKG
Hot or Mild
\$14.99 EA



Dietz & Watson
Franks 24 Count
Regular **\$10.49 EA**
Beef **\$12.59 EA**



Land O'Lakes
Margarine Quarters
16 OZ
\$2.29 EA



Crystal Farms
Shredded Cheese 8 OZ
Assorted Varieties
2/\$5.00



Coffee-Mate
Coffee Creamer 64 FO
Assorted Varieties
\$6.99 EA



Minute Maid
Juice Drinks 59 FO
Assorted Varieties
\$1.99 EA



Hanover "Country Fresh"
Classic Vegetables 14 OZ
Assorted Varieties
2/\$3.00



Marie Callender's
Pot Pies 15 OZ
Assorted Varieties
2/\$6.00



Hot
Pockets 8.5-9 OZ
Assorted Varieties
2/\$4.00



Best Yet
Pasta Sauce 24 FO
Assorted Varieties
\$1.79 EA



Best Yet
Salad Dressing 16 FO
Assorted Varieties
\$1.99 EA



Best Yet
Pasta 12-16 OZ
Excludes: Lasagna
\$1.25 EA



Poland Spring or
Deer Park Spring Water
24 Count
\$4.99 EA



Best Yet
Cooking Oil 48 FO
Canola or Vegetable
\$3.99 EA



Fresh
Bananas
\$0.59 LB



Beefsteak
Tomatoes
\$1.29 LB



Fresh
Green Cabbage
\$0.49 LB