

# Sam & Sam Meats

851 Upland Ave Upland, Pa 19013 (610) 874-9484 Sales AD: 4/17 – 4/23/24



USDA Choice  
Bottom Round Roast  
**\$4.89 LB**



USDA Choice  
Rump Roast  
**\$4.89 LB**



USDA Choice  
Rump Steaks  
**\$5.69 LB**



Family Pack  
Fresh Ground Beef  
**\$3.69 LB**



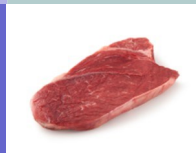
USDA Choice  
Cubed Steaks  
Or Peppered Steaks  
**\$5.99 LB**



USDA Choice  
Chuck Fillet Steaks  
**\$5.99 LB**



Family Pack  
USDA Choice  
Beef Flanken Rib  
**\$7.99 LB**



USDA Choice  
Shoulder London Broil  
**\$5.29 LB**



USDA Choice  
Beef Kabobs  
**\$5.99 LB**



USDA Choice  
Sirloin Steaks  
**\$7.49 LB**



Porterhouse or  
T-Bone Steaks  
**\$6.99 LB**



USDA Choice  
Boneless Shoulder Steaks  
**\$5.69 LB**



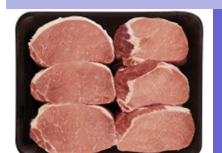
USDA Choice  
Top Round London Broil  
**\$6.99 LB**



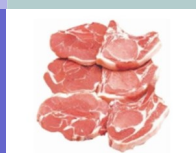
Thick or Thin  
Oxtails  
**\$7.49 LB**



Cry-O-Vac  
Beef Brisket  
**\$3.99 LB**



Family Pack  
Loin End Pork Chops  
**\$1.79 LB**



Family Pack  
Rib End Pork Chops  
**\$1.79 LB**



Family Pack  
Center-Cut Pork Chops  
**\$2.39 LB**



Baby Back  
Spare Ribs  
**\$3.99 LB**



Family Pack  
Boneless Pork Chops  
**\$2.49 LB**



Boneless  
Pork Loin Roast  
**\$2.49 LB**



Fresh Pork  
Neck Bones  
**\$1.49 LB**



Frozen Shoulder  
Round Bone Lamb Chops  
**\$4.99 LB**



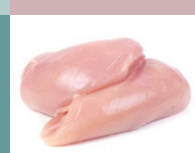
Frozen Shoulder  
Blade Lamb Chops  
**\$4.89 LB**



Family Pack  
Chicken Drumsticks  
**\$0.99 LB**



Family Pack  
Chicken Tenders  
**\$2.99 LB**



Family Pack  
Boneless Chicken Breast  
**\$1.99 LB**



Family Pack  
Chicken Leg Quarters  
**\$0.79 LB**



Whole  
Frying Chickens  
**\$1.89 LB**



Family Pack  
Ground Turkey  
**\$2.99 LB**



Dietz & Watson  
Honey Glazed Turkey  
Save \$1.50 LB  
**\$7.29 LB**



Dietz & Watson  
Honey Grilled Chicken  
Save \$1.60 LB  
**\$5.99 LB**



Eckrich  
Honey Ham  
Save \$0.60 LB  
**\$4.89 LB**



Hormel Premium  
Cooked Ham  
Save \$0.20 LB  
**\$3.59 LB**



Dietz & Watson  
Beef Bologna  
Save \$0.50 LB  
**\$4.49 LB**



Mrs. Ressler's  
Top Round Roast Beef  
Save \$0.20 LB  
**\$6.39 LB**



Godshall's  
Regular Turkey Bacon  
Save \$0.20 LB  
**\$6.29 LB**



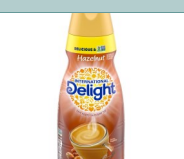
Dietz & Watson Beef  
Skinless Sausage 3 LB PKG  
Hot or Mild  
**\$14.99 EA**



Dietz & Watson  
Franks 24 Count  
Regular **\$10.49 EA**  
Beef **\$12.59 EA**



Imperial  
Spread Quarters  
16 OZ  
**2/\$3.00**



International Delight  
Coffee Creamer 32 FO  
Assorted Varieties  
**\$3.99 EA**



Yoplait Go-Gurt  
Portable Yogurt 8 Count  
Assorted Varieties  
**2/\$5.00**



Daisy  
Regular Sour Cream  
8 OZ  
**2/\$3.00**



Simply  
Orange Juice 52 FO  
Assorted Varieties  
**\$3.69 EA**



Luigi's Real Italian  
Water Ice 6 Count  
Assorted Varieties  
**2/\$5.00**



Stouffer's "Signature Classic"  
Meals 6.3-12.8 OZ  
Excludes: Large Size  
**2/\$6.00**



Celeste  
Pizza For One 5-5.9 OZ  
Assorted Varieties  
**\$1.25 EA**



Turkey Hill Premium  
Ice Cream 46 FO  
Excludes: All & Simply Natural  
**2/\$7.00**



Kraft  
BBQ Sauce 18 FO  
Assorted Varieties  
**\$1.99 EA**



Starkist Solid White  
Albacore Tuna 5 OZ  
In Water or In Oil  
**2/\$3.00**



Chef Boyardee  
Canned Pasta 14.5-15 OZ  
Assorted Varieties  
**4/\$5.00**



Barilla  
Pasta 12-16 OZ  
Excludes: Lasagna  
**2/\$3.00**



Nestle Pure Life  
Purified Water  
28 Count  
**\$4.49 EA**



Hunts  
Tomato Ketchup  
20 OZ  
**2/\$3.00**



Jumbo  
Sweet Onions  
**\$1.09 LB**



Beefsteak  
Tomatoes  
**\$1.49 LB**



Fresh  
Iceberg Lettuce  
**\$1.59 EA**